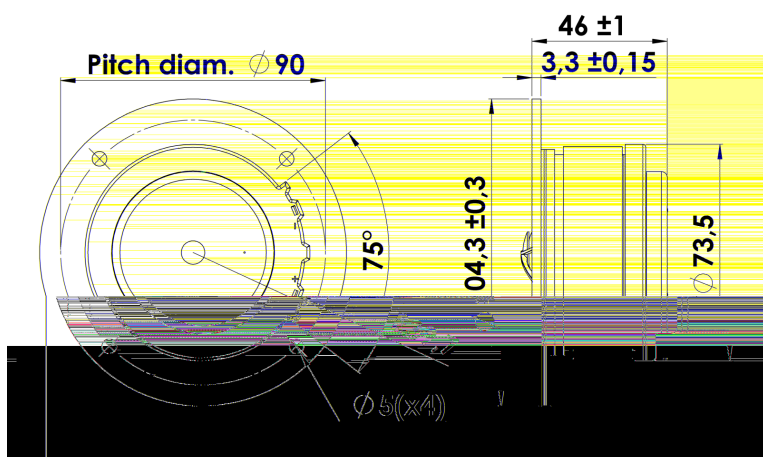




TWEETER

D2904/980000

The Classic tweeters are among the many highly praised designs in Classic series. They have enjoyed success over 3 decades. And still among the best tweeters available. The D2905/9000 tweeter kick-started a new era with a line of very high quality 1" tweeters, today known as -9300, -9500, -9700 and -9800. Despite their many years on the market still used in many top High-End speakers around the world.



KEY FEATURES:

- 1" Aluminium Dome Diaphragm
- Patented Symmetrical Drive (SD) motor
- Wave Guide
- Low Resonance Rear Chamber
- Black Painted Alu Face Plate

T-S Parameters

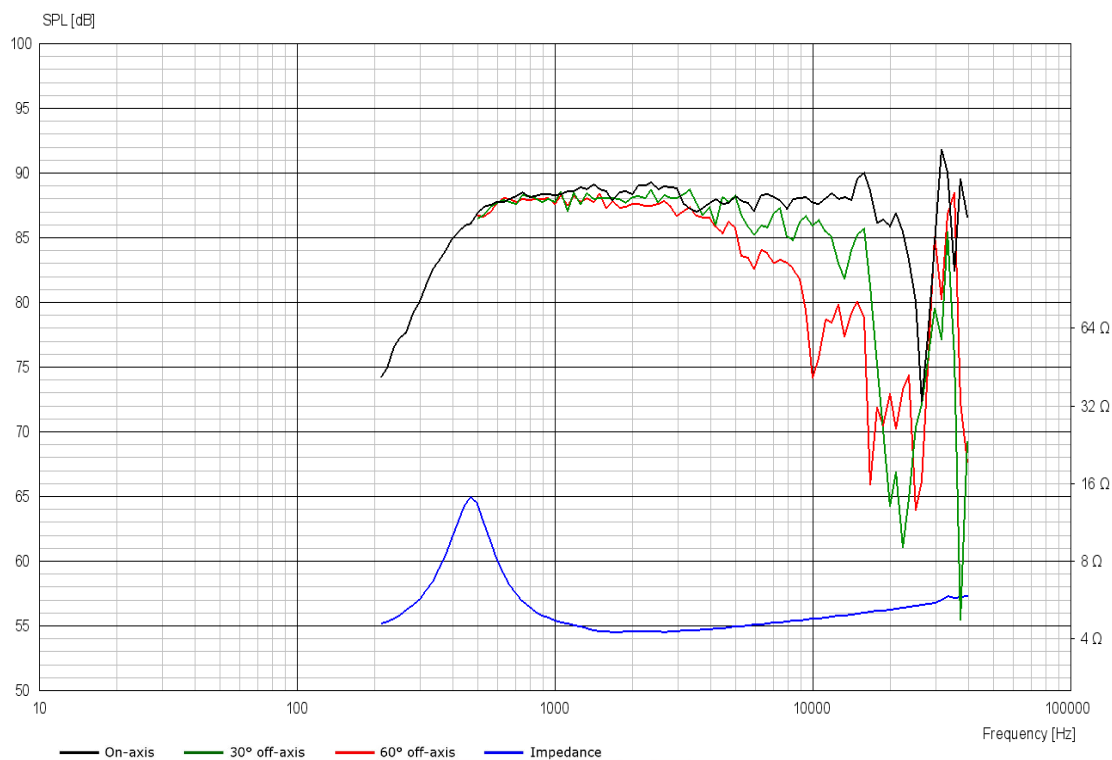
Resonance frequency [fs]	500 Hz
Mechanical Q factor [Qms]	3.09
Electrical Q factor [Qes]	0.84
Total Q factor [Qts]	0.66
Force factor [Bl]	2.8 Tm
Mechanical resistance [Rms]	0.61 kg/s
Moving mass [Mms]	0.6 g
Compliance [Cms]	0.20 mm/N
Effective diaph. diameter [D]	33 mm
Effective piston area [Sd]	8.5 cm ²
Equivalent volume [Vas]	0.02 l
Sensitivity (2.83V/1m)	88 dB



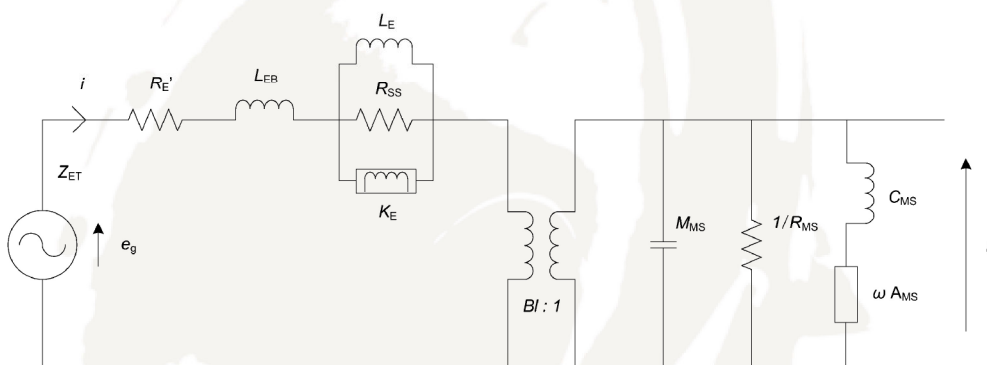
CLASSIC

TWEETER

D2904/980000



Advanced Parameters (Preliminary)



Electrical data

Resistance [R_E']	-
Free inductance [L_{EB}]	- mH
Bound inductance [L_E]	- mH
Semi-inductance [K_E]	- SH
Shunt resistance [R_{SS}]	-

Mechanical Data

Force Factor [BI]	- Tm
Moving mass [M_{MS}]	- g
Compliance [C_{MS}]	- mm/N
Mechanical resistance [R_{MS}]	- kg/s
Admittance [A_{MS}]	- mm/N

SCAN SPEAK