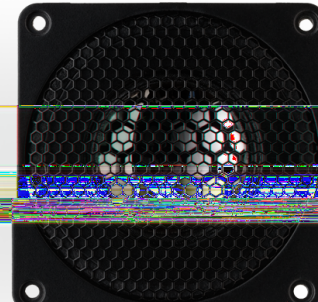
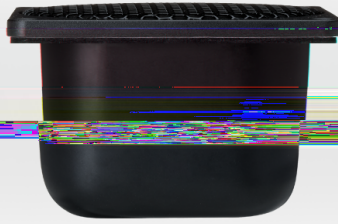


BD50-6-039

High -m idrange driver

DOMEMATERIAL: DIAMOND
APPLICATION: TWEETER
NOMINAL DIAMETER: 50 mm
SENSITIVITY: 93 dB



MAIN FEATURES :

OVERHUNG MOTOR DESIGN

SOFT FABRIC SURROUND

VENTED VC & POLE PIECE

NO FERROFLUID FILLING

800 HZ - 30 KHZ

The **BD50 - 6 - 039** is a 2 inch tweeter with ultra hard **diamond dome** in a 106 mm frontplate.

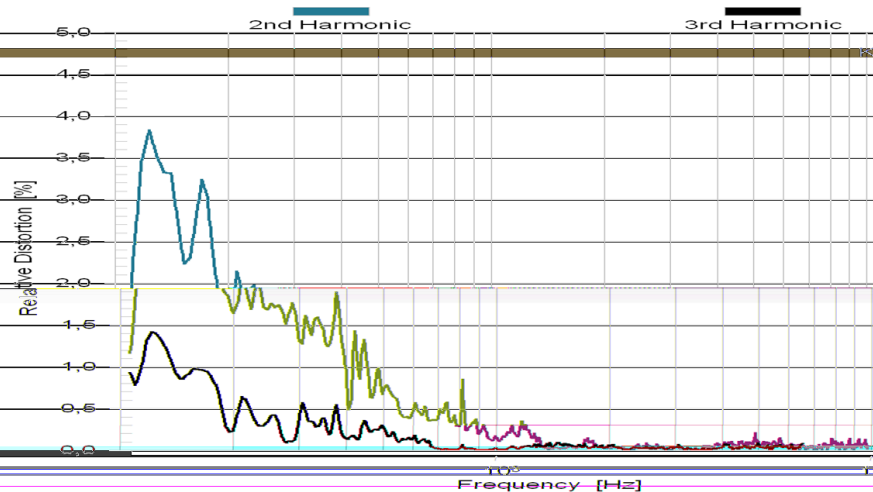
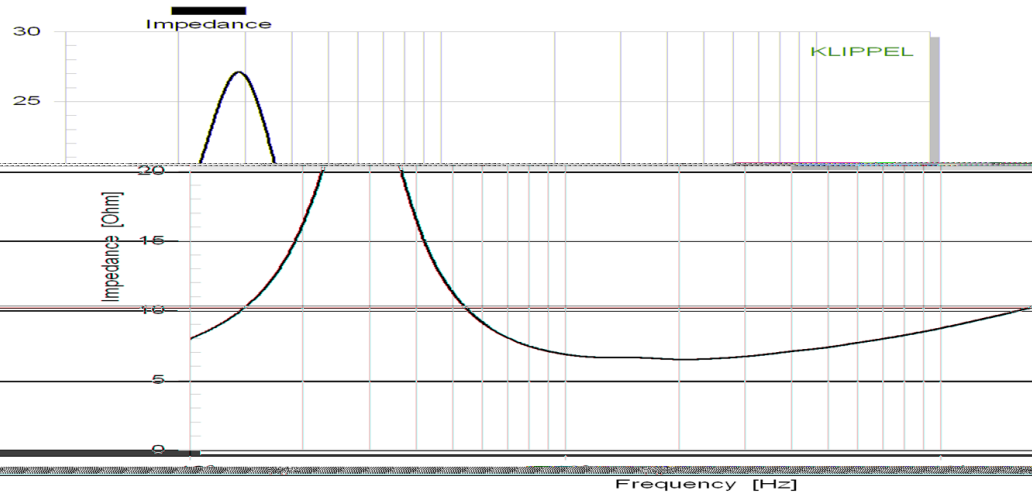
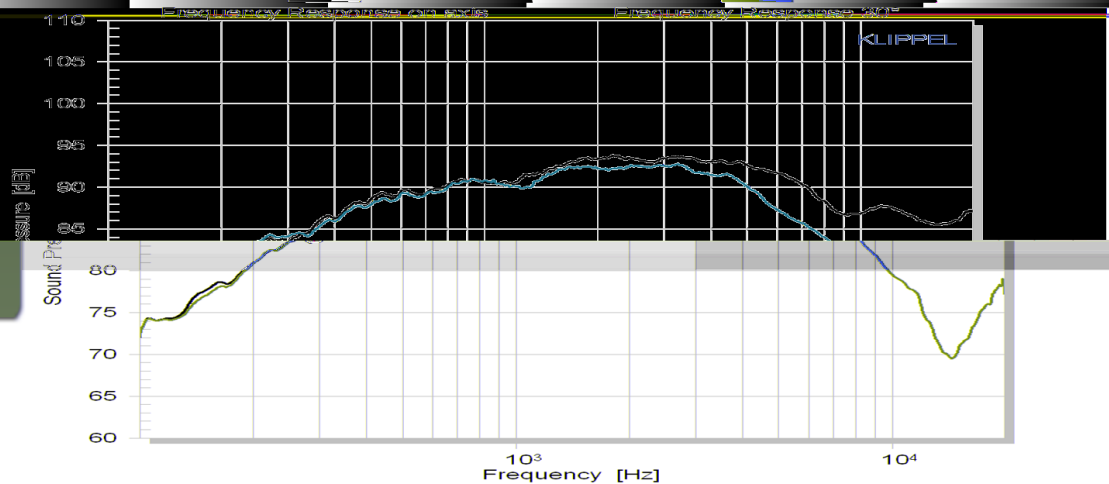
As the dome breakup is around 35 kHz and well damped, no cutouts are required.

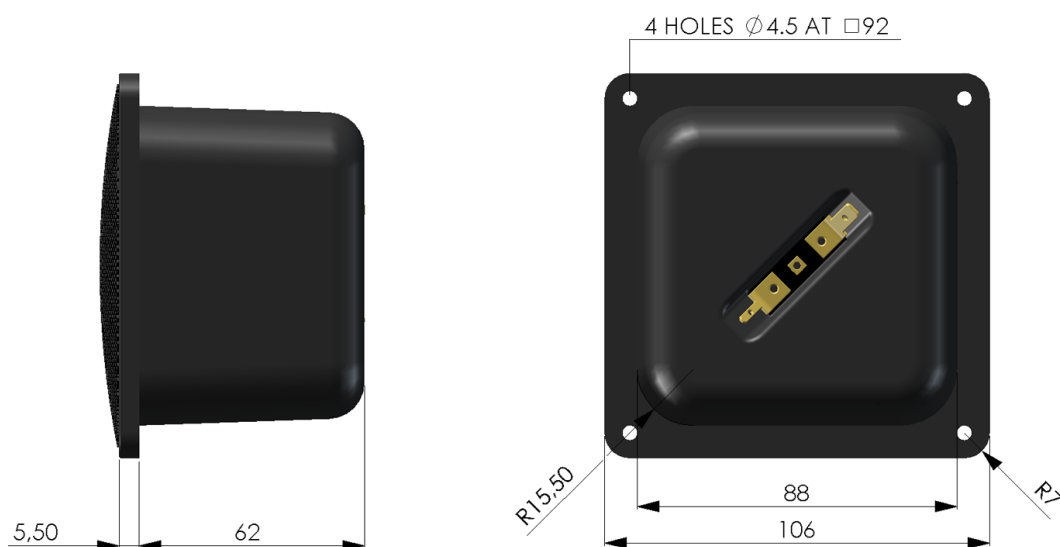
The unsurpassed rigidity of the diamond dome leads to most accurate conversion from electrical energy to sound pressure.

An **FEA optimized** overhung motor design with vented aluminium voice coil former and neodymium magnet guarantees low energy storage and excellent heat transfer.

The **soft fabric surround** centers the moving parts with distinctive linearity.

We recommend an application above 800 Hz.





Mechanical data

| | | |
|---|-------------------------------|----|
| Overall square | 106 | mm |
| Cutout hole square | 88 | mm |
| Front plate depth | 5.5 | mm |
| Overall depth | 67.5 | mm |
| Motor assembly diameter | - | |
| Motor assembly depth | - | |
| Screw fitting | DIN 7984, 4mm | |
| Terminal | + : 4.8 x 0.8 / - : 2.8 x 0.8 | mm |
| Shipping weight / netweight (one piece) | 0.98 / 0.88 | kg |
| Shipping box size (pair) | 130 / 130 / 190 | mm |

Thiele/Small Parameters

| | | | |
|---------------------------|-----|-------|--------|
| Sensitivity (2.83V / 1m) | Lp | 93* | dB |
| DC-resistance | Re | 5.8 | Ohm |
| resonance frequency | Fs | 290 | Hz |
| equivalent volume of air | Vas | - | L |
| mechanical Q | Qms | 2.27 | |
| electrical Q | Qes | 0.57 | |
| total Q | Qts | 0.45 | |
| effective piston area | Sd | 23.8 | cm² |
| moving mass | Mms | 1.71 | g |
| suspension compl. | Cms | 0.175 | mm/N |
| mechanical resistance | Rms | 1.38 | kg x s |

Voice Coil data

| | | | |
|----------------------------|------|----------|------|
| Power handling | P | 120* | Watt |
| Linear excursion | Xmax | +/- 0.2 | mm |
| Voice coil diameter | | 30.5 | mm |
| Voice coil former material | | Al | |
| Voice coil wire material | | Cu | |
| Voice coil inductance | Le | 0.04 | mH |
| Force factor | Bl | 5.64 | N/A |
| Motor type | | Overhung | |
| Ferrofluid filling | | no | |

* Please refer to www.accuton.com for exact measurement conditions and further information.