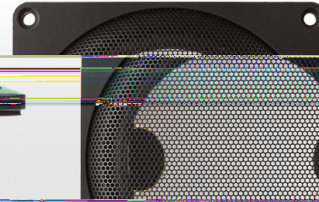


C90-6-079

Midrange driver

DOMEMATERIAL: CERAMIC
APPLICATION: MIDRANGE
NOMINAL DIAMETER: 130 mm
SENSITIVITY: 87 dB



accuton

MAIN FEATURES

KLIPPEL SPECIAL TUNING CUTOUTS

OVERHUNG MOTOR DESIGN

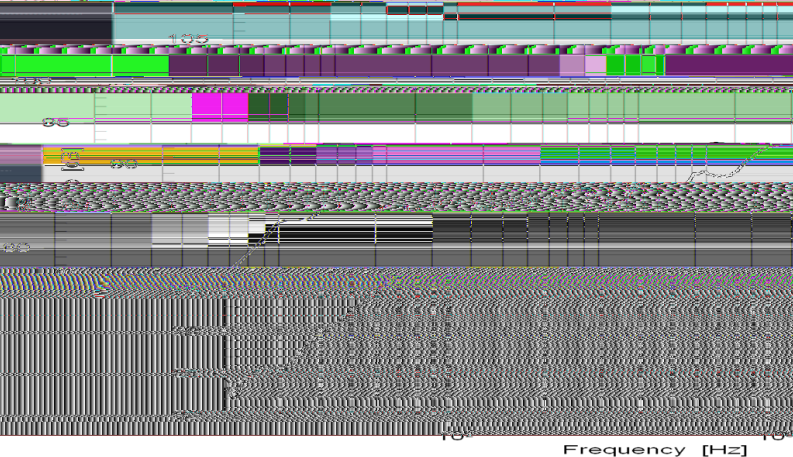
38 MM ALUMINIUM VC FORMER

INVERTED THIN FABRIC SURROUND

VENTED POLE PIECE & SPIDER

250 HZ - 5 KHZ IN CLOSED BOX

Frequency Response



The C90-6-079 is a midrange driver with ultra hard ceramic dome.

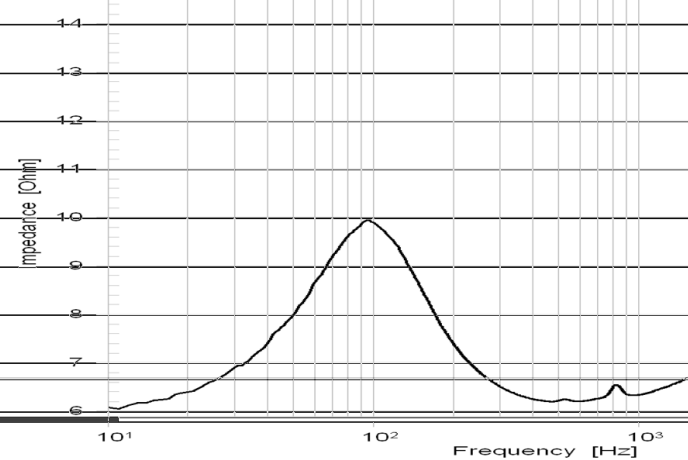
Anti-resonant cutout fills in the ceramic dome provide for damping of the 8 kHz dome resonance.

A FEA optimized overhung motor design with 38 mm aluminium voice coil former and ferro-fluid filling guarantees excellent heat transfer.

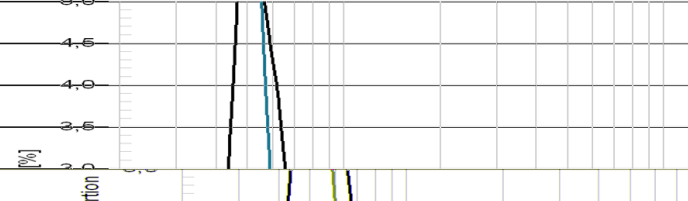
The low mass inverted fabric surround and a thin fabric spider center the moving parts with high linearity.

As a typical home stereo midrange driver, we recommend our C90-6-079 for an application from 250 Hz - 5000 Hz.

Impedance



Distortion





C90 - 6 - 079
Midrange driver

4 HOLES Ø4.5 AT □116

Mechanical data

| | | |
|--|-------------------------------|----|
| Overall square | 130 | mm |
| Cutout hole square | 111 | mm |
| Frontplate depth | 6.5 | mm |
| Overall depth | 64.5 | mm |
| Motor assembly diameter | 102 | mm |
| Motor assembly depth | 32 | mm |
| Screw fitting | DIN 7984, 4mm | |
| Terminal | + : 6.3 x 0.8 / - : 6.3 x 0.8 | mm |
| Shipping weight / net weight (one piece) | 2.0 / 1.8 | kg |
| Shipping size (pair) | 180 / 180 / 240 | mm |

Thiele/Small Parameters

| | | | |
|--------------------------|-----|-------|--------|
| Sensitivity (2.83V / 1m) | Lp | 87.5* | dB |
| DC-resistance | Re | 5.9 | Ohm |
| Resonance frequency | Fs | 105 | Hz |
| Equivalent volume of air | Vas | 3.2 | L |
| Mechanical Q | Qms | 0.9 | |
| Electrical Q | Qes | 1.52 | |
| Total Q | Qts | 0.57 | |
| Effective piston area | Sd | 75 | cm² |
| Moving mass | Mms | 5.7 | g |
| Suspension compliance | Cms | 0.39 | mm/N |
| Mechanical resistance | Rms | 4.2 | kg x s |

Voice Coil data

| | | | |
|----------------------------|------|----------|------|
| Power handling | P | 120* | Watt |
| Linear excursion | Xmax | +/- 2.6 | mm |
| Voice coil diameter | | 38 | mm |
| Voice coil former material | | Al | |
| Voice coil material | | Cu | |
| Voice coil inductance | Le | 0.12 | mH |
| Force factor | Bl | 3.84 | N/A |
| Motor type | | Overhung | |
| Ferrofluid filling | | yes | |

* Please refer to www.accuton.com for exact measurement conditions and further information.

All rights reserved - All data with reservation and subject to change.

Thiel & Partner GmbH Kantstrasse 1 50259 Pulheim T +49 (0) 2238 / 475475 a.bankewitz@accuton.com