



MDM 55

Hybrid Midrange

Ø 2.1" soft dome midrange, 8Ω



SPECIFICATIONS

General Data

Overall Dimensions	HxW	87x87/86mm (3.42x3.42/3.38")
Nominal Power Handling (DIN)	P	200 W
Transient Power 10ms		1000 W
Sensitivity 1W/1M		89.5 dB SPL
Frequency Response		See Graph
Dome Type		Acuflex™ hand coated soft dome
Net Weight	Kg	0.27

Electrical Data

Nominal Impedance	Z	8Ω
DC Resistance	Re	6.3 Ω
Voice Coil Inductance @ 1KHz	LBM	0.19 mH

Voice Coil and Magnet Parameters

Voice Coil Diameter	DIA	54mm
Voice Coil Height		6mm
HE Magnetic Gap Height	HE	4mm
Max. Linear Excursion	X	± 1mm
Voice Coil Former		Aluminum
Voice Coil Wire		Hexatech™ Aluminum
Number Of Layers		2
Magnet System Type		Hybrid rear vented
B Flux Density	B	0.85 T
BL Product	BXL	5.2 N.A

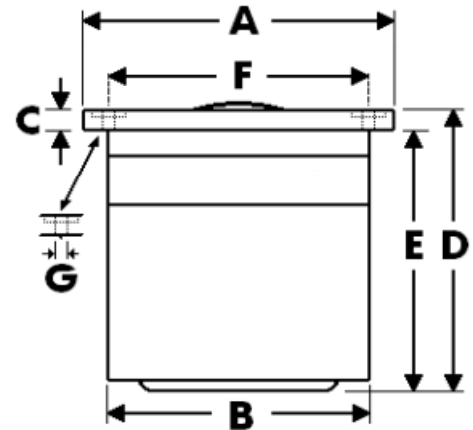
T-S Parameters

Suspension Compliance	Cms		
Mechanical Q Factor	Qms	1.13	
Electrical Q Factor	Qes	1.75	
Total Q Factor	Qts	0.68	
Mechanical Resistance	Rms		
Moving Mass	Mms	2.8 g	
Eq. Cas Air Load (liters)	VAS		
Resonant Frequency	Fs	380 Hz	
Effective Piston Area	SD	28 cm ²	

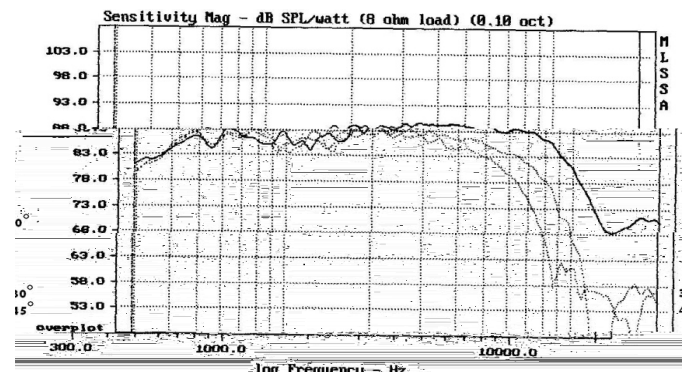
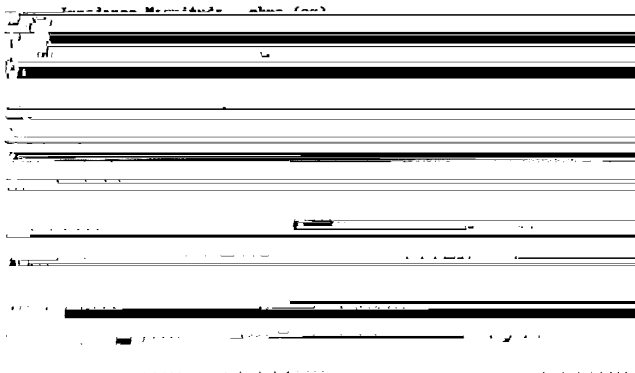
FEATURES

- * 2.1" Acuflex™ hand coated soft dome
- * 2.1" Large Hexatech™ Aluminum voice coil
- * Internally damped, Aluminum rear chamber
- * Wide range linear performance
- * Low resonance point
- * High power handling

Unit Dimensions



A - Square flange HxW	87mm/87mm
B - Cut out diameter	75mm
C - Flange thickness	4mm
D - Overall height	86mm
E - Rear chamber depth	84mm
F - Mounting holes location	72mm
G - 4 Mounting holes, at 90° interval, inner hole diameter	Ø 4mm
pocket	h 2mm, Ø 7mm



Morel operate policy of continuous product design improvement, consequently specifications are subject to alteration without prior notice.