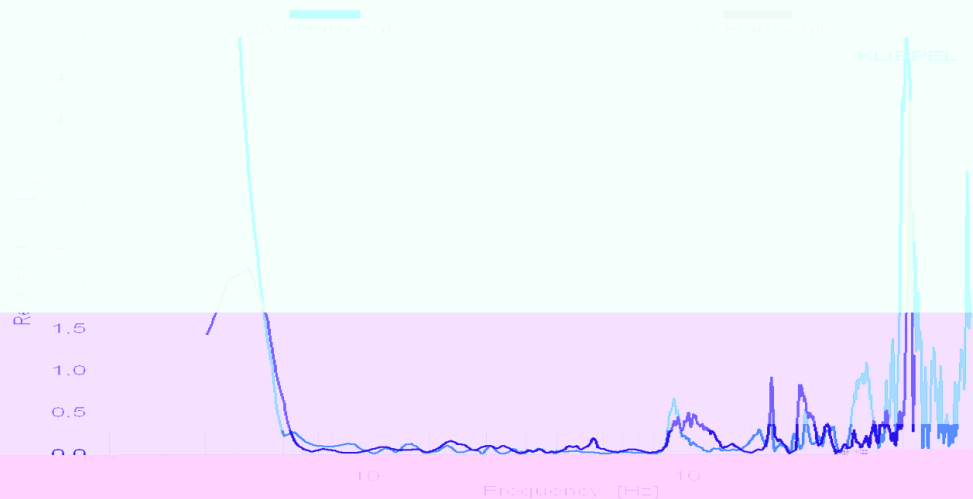
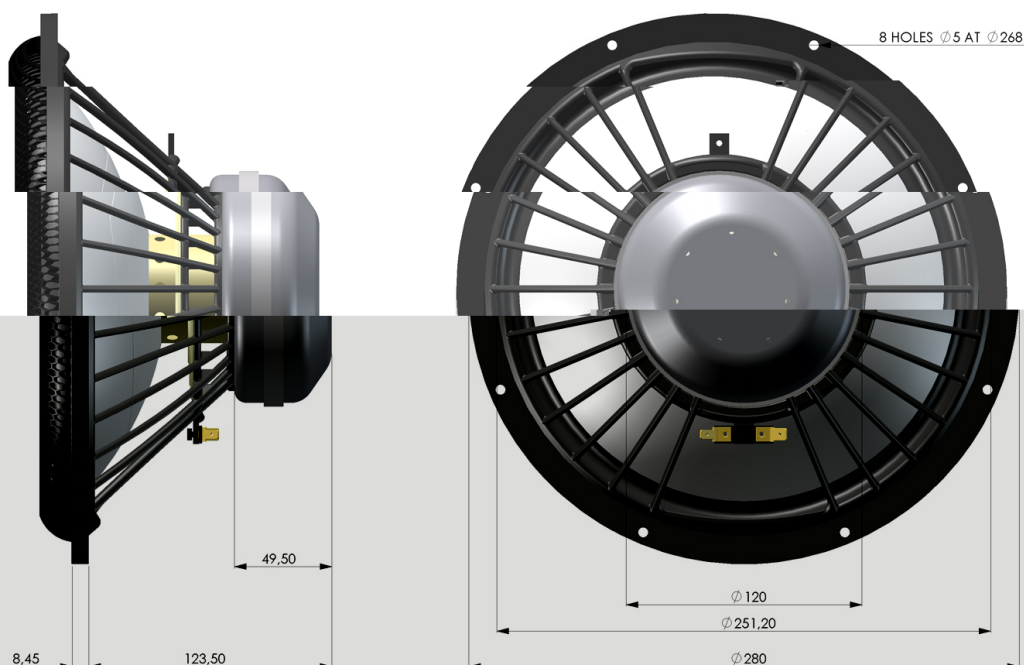


Bass driver





S280-18282M
Bass driver

Mechanical data

Overall diameter	280	mm
Cutout hole diameter	251.2	mm
Frontplate depth	8.45	mm
Overall depth	131.95	mm
Motor assembly diameter	120	mm
Motor assembly depth	49.5	mm
Screw fitting	DIN 7984, 4mm	
Terminal	+ : 6.3 x 0.8 / - : 4.8 x 0.8	mm
Shipping weight / net weight	4.5 / 3.8	kg
Shipping box size	300 / 180 / 300	mm

Thiele/Small Parameters

Sensitivity (2.83V / 1m)	Lp	88*	dB
DC-resistance	Re	18.5	Ohm
Resonance frequency	Fs	18	Hz
Equivalent vol. of air	Vas	226	L
Mechanical Q	Qms	6.87	
Electrical Q	Qes	0.27	
Total Q	Qts	0.26	
Effective piston area	Sd	408	cm ²
Moving mass	Mms	8.3	g
Suspension compl.	Cms	0.94	mm/N
Mechanical resistance	Rms	1.37	kg x s

Voice Coil data

Power handling	P	150*	Watt
Linear excursion	Xmax	+/- 6	mm
Voice coil diameter		55	mm
Voice coil former material		Ti	
Voice coil material		Cu	
Voice coil inductance	Le	1.96	mH
Force factor	Bl	25.4	N/A
Motor type		Underhung	
Ferrofluid filling		no	

* Please refer to www.accuton.com for exact measurement conditions and additional information.

All rights reserved - All data with reservation and subject to change.

Thiel & Partner GmbH Rommerskirchenerstrasse 21 50259 Pulheim T +49 (0) 2238 / 475475 info@accuton.com